

**MAKING CONNECTIONS: INEQUALITIES**

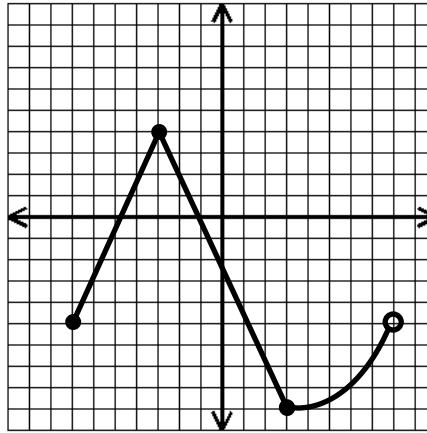
**One Variable Inequalities**

1. Solve the inequality and graph the solution.

$$4(x + 3) + 2x > -24$$



2. Find the domain and range of the graph below.



D: \_\_\_\_\_

R: \_\_\_\_\_

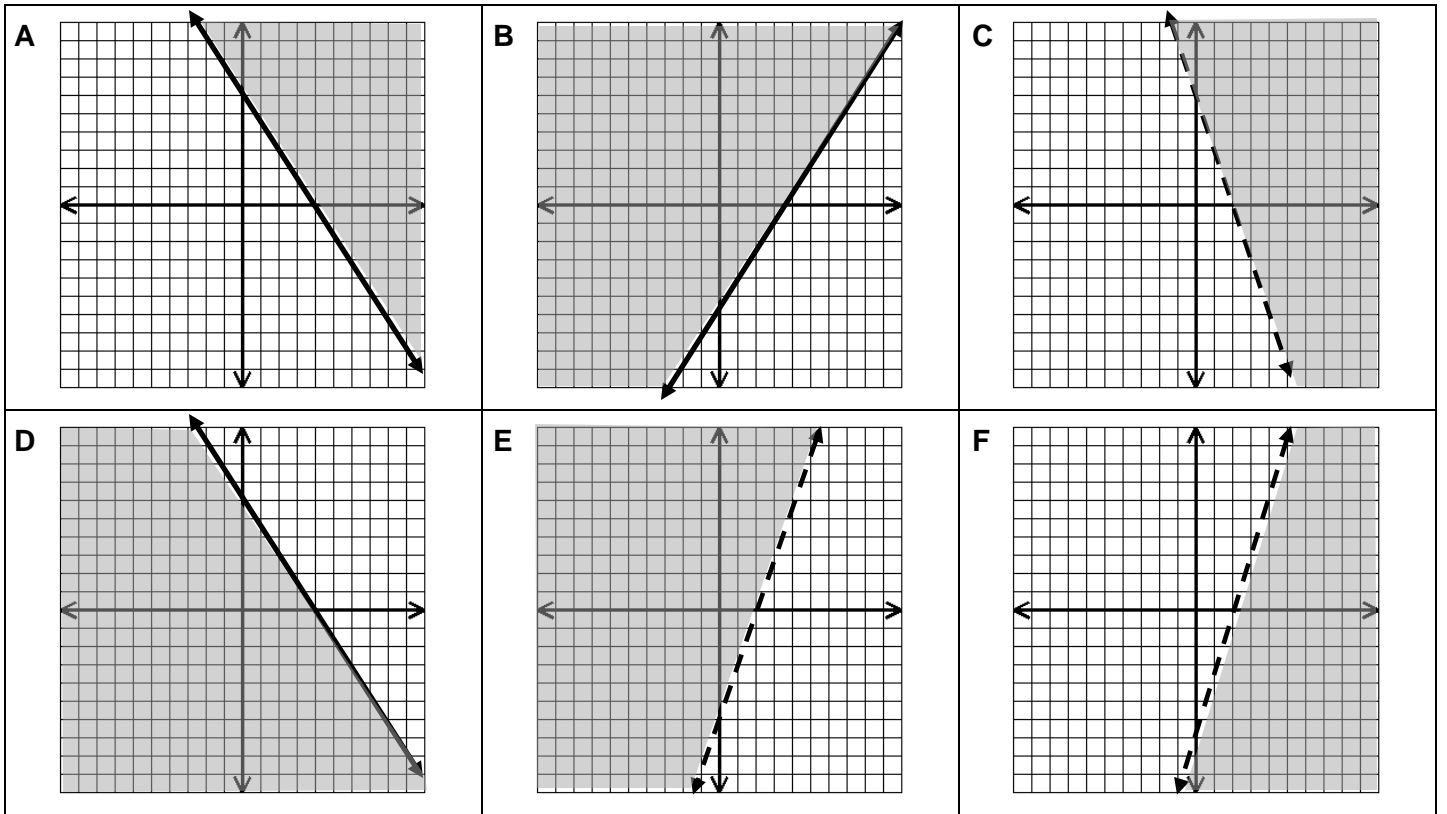
**Two Variable Inequalities**

1. Solve the given inequality for y.
2. Find the matching graph on the matching cards.
2. Cut apart the **Matching Inequalities Cards**.
4. Glue or tape the card next to the matching inequality.

Graph	Inequality
	<b><math>3x + 2y \leq 12</math></b>
	<b><math>3x - 2y \leq 12</math></b>

Graph	Inequality
	$3x - y < 6$
	$3x - y > 6$
	$3x + y > 6$
	$3x + 2y \geq 12$

## Matching Inequalities Cards



## Matching Inequalities Cards

